

2022 - 2023

ANNUAL REPORT

Working together for
our Community.



**Chilliwack
Community
Services**

SHARE • GROW • BELONG



WE PARTNER WITH PEOPLE AND THE
COMMUNITY TO CREATE
OPPORTUNITIES TO ENRICH LIVES.



A MESSAGE FROM OUR BOARD & EXECUTIVE DIRECTOR

Over the year of 2022-2023, our Board of Directors, staff, volunteers and many partners worked together to serve our community and provide 37 programs and services to children, families, youth and seniors in our rapidly growing community. Of note this year, we have seen the ongoing impact of the pandemic, resulting in many Chilliwack residents experiencing increasing economic challenges. Correspondingly, a number of new residents have accessed our supports and services throughout 2022 to present day.

At Chilliwack Community Services our vision is to be an innovative community partner empowering people to share, grow and belong. We do this by supporting one person at a time, coming alongside them with support to make positive change. Because of your support, CCS has been able to provide important community services for 94 years, making it one of the longest serving social service agencies in British Columbia. This year we served a record 13,410 people in our community. At every phase and every age, from “twinkle to twilight”, CCS supports children, youth, families, seniors, newcomers to Canada and those needing training and employment services.

2022/2023 was a year of great success and progress. We owe our success to our Board of Directors, 107 professional staff and 319 volunteers. We are watching with excitement as the Paramount Project is being constructed and strongly believe it will be a great addition to the downtown core of our community. This facility will provide affordable housing to seniors and transitional housing to young adults. The timeline for construction has been on target and we are expecting occupancy in early 2024. As the community and our client needs change, our programs are constantly improving and adapting to better meet the emerging issues. Encapsulated in this year's annual report, you will see an overview including narratives of what supports we have provided the community as a snapshot of our services to Chilliwack.

This is also the time to reflect with gratitude on the support from funders and our community. These supports have helped us to maintain a strong financial position both in the short and long term, which assures the longevity and stability of the programming we offer. We are fortunate to have ongoing program funding from the Government of Canada, City of Chilliwack, and Province of B.C. At the centre of our success are our staff, our community partners, and the sponsors and donors who have helped us to maintain and build on our community programs.

Chilliwack Community Services values our opportunity to continue to serve our community and to make lives better for individuals and families.

Board of Directors 2022-2023

Luke Zacharias	---	President
Chris Veenstra	---	Vice President
Jeffrey Hunt	---	Treasurer
Allan Billingsley		Gary Cooper
Corinne McCabe		Jessie Ramsay
Dan Bibby		Peter Monteith
Kim McLandress		Paul Donaldson
Jason Laynes		Brian Westwell
Brooke Janzen		Chris Csoka

A blue ink signature of Luke Zacharias.

Luke Zacharias
Board President

A black ink signature of Kate Healey.

Kate Healey
Executive Director

2022-2023 YEAR IN REVIEW



12,045 nights of safe
housing provided



4,950 people accessed one
of our food security
programs/services



290 people received therapy



13,079 hot meals
delivered to seniors through
Meals on Wheels



568 individuals received services
from our Training and
Education department



977 immigrants assisted
in settling in Canada



290 people received
services from our Victim
Assistance Program



279 received Family Law
Advocacy services



1,657 children received gifts
this Christmas through our
Christmas Sharing Program



473 adults & 641 children
used the Family Place
Network



289 seniors were assisted through
our Better at Home Program



530 youth accessed our
recreation programs

OUR SERVICES AT A GLANCE

EARLY YEARS

- Regional & Local Child Care Resource & Referral
- Family Resource Programs (Sardis & Downtown)
- Better Beginnings
- Prenatal Training
- Family Navigation

IMMIGRANT SERVICES

- English Language Instruction
- Childcare
- Settlement Services
- Employment Services
- Local Immigration Partnership

TRAINING & EDUCATION

- Family Education Program
- Business Certificate Program
- Pathways to Education Program
- Training and Education Workshops

THERAPY SERVICES

- Family Therapy
- Youth & Family Therapy
- Sexual Abuse Intervention Program
- Intern Therapists

YOUTH SERVICES

- Reconnect Program
- Youth Support & Development
- Recreation
- School's Out Program
- Communities Building Youth Futures
- Intensive Support & Supervision
- Young Family Support

FAMILY SERVICES

- Family Support
- Specialized Victims Assistance
- Family Law Advocacy
- Child & Youth Advocacy Centre
- Family Visits/Enhanced Access

SENIOR SERVICES

- Better at Home
- Social Prescription Program
- Meals on Wheels

FOOD SECURITY

- Starfish Backpack
- Regional & Local Food Hub
- Food Council Initiative

HOUSING

- The Village Residence
- Paramount Project

13,410 PEOPLE SERVED

**319 VOLUNTEERS DONATING
6,631 HOURS**



YOUTH RECREATION

MATTHEW'S STORY

Matthew was introduced to the Youth Recreation program through "Snack Tuesday" for youth aged 13-18 years that ran through the pandemic. One of Matthew's friends was attending the program and invited him to come. After meeting Hunter, the Recreation Outreach Worker at the time, Matthew felt comfortable to attend all Youth Recreation programs on a regular basis, starting with attending every "Snack Tuesday."

Matthew grew up in Surrey and moved to Chilliwack with his Mom when he was 13 years old. Being new to Chilliwack, Matthew was looking for something to do after school. After he was introduced to the Youth Recreation program, he started attending every day. *"I enjoy meeting new people, getting to know people, and doing stuff with people. When I started to come to this program, I didn't have a lot of friends. So I started making friends in Chilliwack at the Youth Recreation Program."*

Matthew is now graduating from High School, is aging out of the Youth Recreation program and is looking to give back to the community. He has seen how special it is to create strong friendships through this program, and continues to be passionate about creating a friendly space for others to connect as he was strongly impacted by this in his own life. He is particularly interested in working with youth, making sure they do not feel alone and feel connected, and have a friend. Matthew envisions himself potentially being a youth support worker in the future: *"I like talking and getting to know people and I want to teach young people how to go out there and make friends. I want to encourage young people to try something new that's out of their comfort zone. I promise, you will get used to doing things that are not in your comfort zone and really be enriched by connecting with other people and doing big activities you wouldn't normally with your family or current support network. Push yourself a little bit, because it will be worthwhile in the end."*

FB AND INSTA: @CCSYOUTHREC

A photograph of three young women sitting in the cockpit of a small airplane. They are all wearing headsets and looking towards the camera. The woman on the right is wearing a green flight helmet. The background shows the interior of the cockpit with various instruments and controls.

YOUTH RECREATION CONTINUED...

ELISE'S STORY

Elise was introduced to the Youth Recreation program through a friend and first attended the "Snack Tuesday" during the pandemic. *"It has been really fun. The reason why is because it gets me out of the house, It has helped my mental health a lot because I get to see people I know every day. The youth leaders Hunter, then Nicola, have really helped me. I have been going every day since June 2021."*

Elise grew up in Chilliwack and was raised by her grandparents. The past couple of years have been especially difficult for Elise because both her grandparents passed away in between 2018 to 2020. Elise lived with her grandparents up until she was 14 years old. After her grandparents passed, she moved back in with her parents, who she had never lived with. She has struggled with depression since this point in her life.

The reason Elise lived with her grandparents was because her mother struggled with various mental health issues and addictions. It was not safe for Elise to live at home. In addition, Elise has a learning disability and was not able to learn as fast as other kids growing up. *"I have ADHD, a sensory processing disorder, and may be autistic."* She could not understand what her mother was doing at a young age. Elise was put into the care of her grandparents at a very young age due to the concerns of her immediate family.

Currently, she has moved back in with her parents due to the passing of her grandparents, and still does not maintain a positive relationship with her mom. At times, when she has been desperate to get out of the home, she has stayed at Cyrus Centre. The Youth Recreation program and Nicola in particular, have been a great support to Elise. In some ways, Elise has seen her as a positive mother-like model in her life. She has been supported at Youth Recreation through really trying times, and continues to be supported.

Elise recommends to other youth like herself, *"I would honestly say they should come to Youth Rec because it's so much fun. You get to meet new people and have new experiences. There are big and special events to attend, but there are also casual drop-ins. Youth Recreation is a place where I can call everybody family. It truly feels this way to me. I don't know what exactly to call it, but whenever I come here, it feels like home to me."*

Elise has one more year of High School to complete. Because of Elise's experience in the Youth Recreation program, she is looking to work in this field when she is older. She is currently looking to volunteer for our Junior Youth Recreation program, or help with event planning. CCS continues to support her through the complexity of her current living circumstances and personal wellness.

FB AND INSTA: @CCSYOUTHREC



IMMIGRANT SERVICES

IRYNA & PAUL'S STORY

In the spring of 2022, Paul and Iryna made the difficult decision to take their two young daughters and leave their families and their home behind due to the rising level of danger posed from the ongoing war in Ukraine.

Although there was a lot of uncertainty with such a large decision, Iryna was able to connect with a host family from the website “I Can Help Host” and their journey to BC began. Paul and Iryna say they chose Canada because of its openness to immigrants. Paul says, “People here are so polite, so open and so friendly. You can talk with everyone”.

Catherine, from their host family, connected them to Alexa Hendricks at Chilliwack Community Services in order to help get their oldest daughter settled in school. While the family was living in Lake Errock at the time, they decided to make the move to Chilliwack so their daughter, who has a passion for art, could attend the Fine Arts school here. “Alexa did everything for us, she registered our daughter and did all paperwork, it was so nice! She's still doing a lot of things for us”.

Through Chilliwack Community Services, Michelle also helped Paul and Iryna with their language assessments and classes. While they had learned English in Ukraine, they had never had in-person conversation so that part was new to them. Having childcare available for their younger daughter during class time was very valuable “we couldn't do this without the daycare”. It is also a place where their younger daughter is able to have time with other children as well as native English speakers which has helped immensely with her ability to learn English. They adore their English teacher, Liz Migic, and they are making great progress with their English because of her.

To other newcomers to Canada, Paul and Iryna would say “Chilliwack Community Services has a lot of help to offer. They have English classes but they have also helped us with other things such as finding a house and looking for jobs”. Paul and Iryna continue to work toward receiving their permanent residency and making Canada their new home.



604-393-3251
WWW.COMSERV.BC.CA



TRAINING & EDUCATION

WHAT HAPPENED THIS YEAR

The **Pathways to Education Program** assists individuals and families by supporting their journey towards increased literacy and education. Learners connect with Pathways through various means, such as local media, our website, other community partners, recommendations from within CCS, and through friends and family who have attended or are attending the program. Learners access the programs services either by enrolling in educational institutions, or attending Pathways facilitated workshops open to the community. In understanding the challenges and barriers our learners face, we offer targeted supports such as a childminding subsidy, connection to tutoring, assisted advocacy with educational institutions, financial help with transportation to classes, and more support from the Pathways to Education Support Worker. Adult Dogwood courses are generally free, with Adult Upgrading Grants available to take care of student fees and supplies for those who wish to upgrade through UFV.

The **Business Certificate Program** provides mature students the opportunity to achieve an Adult Dogwood Certificate, certification in MS Office and Sage Accounting, as well as employment supports to lead to gainful employment. Currently, labour market data is showing that adults without a Dogwood are significantly disadvantaged in their ability to get work; we aim to improve our students with new advantages. The program is designed to serve those who have experienced violence or abuse, a demographic with significantly increased barriers to success in the work world. With this in mind the program partners with two local trauma therapists to provide free therapy sessions for all who want it. Our partnership is with School District 33 allows for classroom space and provision of a teacher who is also a trauma counsellor. Our Education Assistant is a graduate from the program last year. We provide a Support Worker to help students with wrap around care for the other practical needs. All this work is done while teaching business skills and focusing on employment preparation and skills related to attaining and retaining employment. The program includes business education, employment services, transportation supports, childminding subsidy, an attendance and training allowance, and extra learning supports.

The **Family Education Program** has provided a number of different workshops and one-to-one family enhancement sessions. The workshops have included: Circle of Security Parenting; The 3 Knows (know yourself, your child, and your role as a parent); Anger CPR (Choosing a Positive Response); Emotional Adaptability; Parenting Adolescents; The Power of Positive Parenting; The ABC's of Children's Social Emotional Development; and Home Improvement.

What parents said: "I found the confidence and patience I had lost within myself; simplicity and getting back to the basics."

"The exercises we were encouraged to do i.e., Flower and Target, have put it in a visual perspective for me that I am on the right track for changing and breaking generational traumas and conditioning."

FOR MORE INFORMATION ON TRAINING & EDUCATION:

WWW.COMSERV.BC.CA --- 604-792-4267 --- CCSINFO@COMSERV.BC.CA



EARLY YEARS: SARDIS FAMILY PLACE

STEFANIE'S STORY

The Sardis Family Place, is a program offered by Chilliwack Community Services that provides an interactive place for parents and young children to gather for play-based learning and the building of healthy attachments.

Shortly after the pandemic, Stefanie learned about the Sardis Family Place program while chatting with a neighbor whose granddaughter was attending. At the time, Stefanie's daughter was almost 1.5 years old and Stefanie felt that she would benefit from being able to interact with other kids and have some fun at the same time. "We try and go once a week and we absolutely love it. My daughter loves Debbie and Cheryl, it's just been really good for her. She's so comfortable and very confident, and I think the exposure to different people and different kids every single week has been really great for her development".

Stefanie and her daughter particularly enjoy circle time which includes singing and reading stories and of course all the kids love snack time! The variety of crafts offered gives Stefanie and her daughter the chance to do things that they wouldn't necessarily do at home. In addition to all the fun and interactive activities for the kids, Stefanie has also enjoyed having the opportunity to meet other moms and make some connections, "it's really good for your mental health to get out and be around other moms and other kids because you can feel like kind of lonely being at home. So just having that program and that resource has been great".

While Stefanie's daughter will be starting preschool in the fall, Stefanie still plans to attend Sardis Family Place in the afternoons because it has been so beneficial for both of them.



MEALS ON WHEELS

CLIFF'S STORY

Cliff and his wife Pearl relocated to Chilliwack from Winnipeg in 1979 and have lived in the community ever since. While they are both 90 years old, they continue to live independently partially thanks to the Meals on Wheels program offered through Chilliwack Community Services.

Cliff and Pearl began participating in the MOW program about 15 years ago. Receiving meals is something Cliff says is very helpful since he has a “full time position” caring for his wife of 60 years. Pearl has a number of health complications and while she receives help from a home care nurse, Cliff is very hands on when it comes to assisting Pearl on a daily basis. Getting out and about has become a little more difficult so having the meals delivered is one less thing to worry about. In addition to the meals, Cliff says he enjoys his time talking with Jen Sibley, the MOW Coordinator, “she's very nice to talk to, it's nice that she takes the time to chat”.

Interestingly, prior to receiving meals from MOW, Cliff volunteered with the program as a driver for a number of years. “We always had two people, one drove and the other did the running, it was lots of fun”. Cliff really enjoyed giving back to the community and also has fond memories of gathering with the other volunteers.

Cliff and Pearl are grateful to CCS for the assistance that allows them to continue living together independently.



**FOR MORE INFORMATION:
604-792-4267
WWW.COMSERV.BC.CA**



SENIOR SERVICES

RAYNOLD'S STORY

Raynold, a 66-year old man living alone in Chilliwack, received a diagnosis of blood and bone cancer in May 2022. Raynold was shocked and saddened by the news and was forced to leave his job at Walmart in order to begin treatment.

Unfortunately, Raynold is estranged from his ex-wife and children who live in the Vancouver area. While they are aware of his diagnosis, they are not willing to provide any support. This lack of support has been very disheartening and also very painful for Raynold, in addition to creating logistical barriers since he no longer drives himself.

Fortunately, in June of last year Raynold was connected with Leila Reshid at Chilliwack Community Services. Leila works as a Seniors Community Connector and has provided support and assistance to Raynold in a variety of ways. For example, she has helped with arranging taxis to take him to his appointments and also provided a heater for his home in the winter. Raynold is very grateful for the help that Leila has provided "she's a nice, kind lady. Whenever I call, she answers me and she always comes over when she says she will even though I know she is very busy".

Raynold is grateful for Leila and the Seniors Community Connector program. Knowing that someone is concerned about him has given him "independence and courage", two things he needs as he waits for a bone marrow transplant. Raynold hopes that sharing his experience will help others in similar situations feel less alone and more willing to ask for help.

604-792-4267
WWW.COMSERV.BC.CA



OUTREACH THERAPY SERVICES

STACEY'S STORY

In 2021, Stacey and her teenaged son were forced to flee their home town of 20 years after experiencing trauma and an abusive situation there. They made their way to Chilliwack in hope of a fresh start. Stacey and her son stayed with friends for the first 6 months, however the time came to find a place of their own. This was during the pandemic and Stacey didn't know where to turn. She was eventually able to find shelter at the Anne Davis transition house while her son stayed at the Cyrus center before being moved to a group home. Although they still saw each other every day, Stacey felt that her son needed more support than she was able to offer at that time.

While people from the Ministry of Child and Family Development (MCFD) were helping her son get the support he needed, they also referred Stacey to Therapy Services at Chilliwack Community Services. This is where Stacey began working with Kim Dawn, one of the therapists at CCS. When speaking about therapy, Stacey says "it changed my life, it really did. I felt nurtured and without that I wouldn't have been able to process my thoughts and what happened to me." Kim has been impressed by the strength and resiliency that Stacey has shown and has seen a lot of growth in her. Stacey notes that the tools Kim provided in therapy have been very useful in helping her move through the trauma in particular, "journaling has made a big difference for me." Stacey has continued to use the tools she learned in therapy to help her navigate the challenges in her life.

During this time, Stacey and her son also worked with Kayla Mayer, a Family Support Worker at CCS, this added another level of caring and connection. Stacey describes Kayla as "so lovely" and notes that she even went to look at apartments with Stacey and her son when they were looking for a place to call home. Having that type of support from Kayla was very meaningful.

Through the support of Kim and the Therapy Services program at Chilliwack Community Services, Stacey has been able to land on her feet and also set goals and make plans for the future. Stacey hopes that sharing her story with others who are struggling will help them to know that there is hope for a brighter future and that help is available.

WANT TO LEARN MORE? --- CCSINFO@COMSERV.BC.CA



SPECIALIZED VICTIMS ASSISTANCE

AN INTERVIEW WITH CHILLIWACK RCMP

Chilliwack Community Services recently had the opportunity to speak with a member of the RCMP to gain insight into some of the major issues that Chilliwack as a community, is currently facing. The Member discussed the importance of programs such as our Specialized Victims Assistance Program (SVAP) as well as how valuable it has been for CCS to provide a comfortable and safe space for the RCMP to interview children who have been victims of crime and sexual abuse.

During their time working in the domestic abuse department in Chilliwack this member of the police has seen a rise in the incidents of domestic assault. They note that Chilliwack has some of the highest rates for domestic abuse in the Fraser Valley with approximately 1300 calls per year coming in. "Having SVAP and other support programs in place to help victims, as well as having things like Purple Light Nights to bring awareness to domestic assault is huge because a large part of reducing the incidents has to do with victims reporting and sharing their stories which takes a lot of courage".

The police are supportive of programs such as SVAP because "the SVAP workers, Nancy Drewery, Jodie Burrell, and Kristy Tataren, are able to provide extra safety measures that the police can't give, and they have access to certain resources that the police don't have access to. Victims can have conversations with Nancy, Jody and Kristy and trust that the information isn't going to come back to the police. Some victims just don't want the police to know everything because they're scared". Overall, there is still a great need for an increase in awareness and preventative measures when it comes to family violence.

Another issue that police would like to raise awareness around is the increase in child abuse rates over the last few years noting that they have investigated over 800 allegations of child sexual abuse. Again, an increase in awareness regarding how to identify child abuse, as well as an increase in education regarding what to do and also what not to do if you suspect a child is being abused, is needed.

The RCMP want people to know that "if you suspect that a child is being abused, you shouldn't be interviewing them yourself, you should be reporting it to the police". The police who work with children who have been abused have received specialized training in how to properly conduct a child interview. "You have to be very careful in the way in which you phrase your questions".

This is where the Butterfly Room at Chilliwack Community Services comes in. The Butterfly Room is a room dedicated to holding space for children who have been victims of crime. "Having a victim come to a police detachment to give a statement can be very intimidating, especially for a child. Having a safe, soft interview space away from a police station makes it easier for victims to want to talk about what happened to them". While spaces like the Butterfly Room are a step in the right direction, more funding is needed in order to establish a more comprehensive center for children and youth experiencing abuse in our community.



WANT TO LEARN MORE? --- CCSINFO@COMSERV.BC.CA



FOOD SECURITY

Chilliwack Community Services has served a vital role in food security through our Meals on Wheels program for nearly twenty years and the Starfish Back Pack Program for nearly ten years. CCS recognizes the unprecedented pressure individuals in our community are facing on a daily basis when it comes to the financial burdens they encounter. With increased cost of living, sky-rocketing food prices, and impacted access to regular supply of food, CCS is actively responding through our collaborative approach to food security.

Starfish Back Pack Program:

The Starfish Back Pack Program has provided on average 274 hampers every two weeks in 24 schools throughout the school year, serving approximately 1,096 individuals bi-weekly. Over the last year, this program has seen significant increase in demand and has served an average 54 more families, and approximately 216 people, compared to 2021-2022. The Starfish Back Pack Program now runs in Elementary, Middle, and High Schools in the district supporting families of diverse backgrounds throughout our community.

Chilliwack Community Food Hub:

The Chilliwack Community Food Hub is a facility that is shared between CCS, Chilliwack Bowls of Hope, and the Salvation Army. This facility, operating out of the Salvation Army on Yale Rd, serves as a hub for food security providing a shared facility for all the three partners to provide food security to some 4,696+ people a month. Together we are working on a long-term sustainable plan for identifying and supporting other potential roles in food security issues, such as community kitchens, gleaning, food education, and community gardens.

At the Chilliwack Community Food Hub, we have focused on enhancing the quality of the food supply through the creation of kitchen facilities, commercial coolers and freezers which has expanded our food supply to fresh fruit, vegetables, milk, meat, eggs, bread and other perishable items.

Upper Fraser Valley Regional Food Hub:

After the ongoing success of the Chilliwack Community Food Hub, the three partner agencies partnered with United Way of British Columbia to implement the Upper Fraser Valley Regional Food Hub (UFVRFH). This initiative supports food security programs and services from Chilliwack to Boston Bar. A significant focus of the UFVRFH is on food justice, supporting access to healthy food regardless of income, race, religion, and sexual orientation.

This initiative is supporting approximately 2,331 people a month, and provides 9,423 meals per month.

FOR MORE INFORMATION ON FOOD SECURITY IN CHILLIWACK:

WWW.COMSERV.BC.CA --- 604-792-4267 --- CCSINFO@COMSERV.BC.CA



THE VILLAGE HOUSING

The Village is a 33 unit apartment building of 3 floors of affordable housing. The third and fourth floors consist of 22 units for adults living with multiple barriers. These floors are operated in partnership with Creative Centre Society and their Clubhouse program. The second floor is 11 units of affordable youth transitional housing. The youth transitional housing program is run in collaboration with the Village Residence Worker Team and the Village Youth Support Worker.

The primary program at the Village is to provide safe and stable housing, with access to 24/7 support staff, to help smooth out bumps in the journey for the youth living independently. The youth are also supported by the Village Youth Support Worker, who is readily available and accessible with their office being relocated to the youth lounge on the second floor. The Village Youth Support Worker performs outreach and provides one-on-one supports aiding youth in their self-identified goals. The youth worker also facilitates a life skills education program and offers community outreach activities wherever possible (such as art, crafts, community walks, etc.). This past year has seen the youth stabilizing in their housing, with the introduction and roll out of a new program agreement that was based on youth feedback.

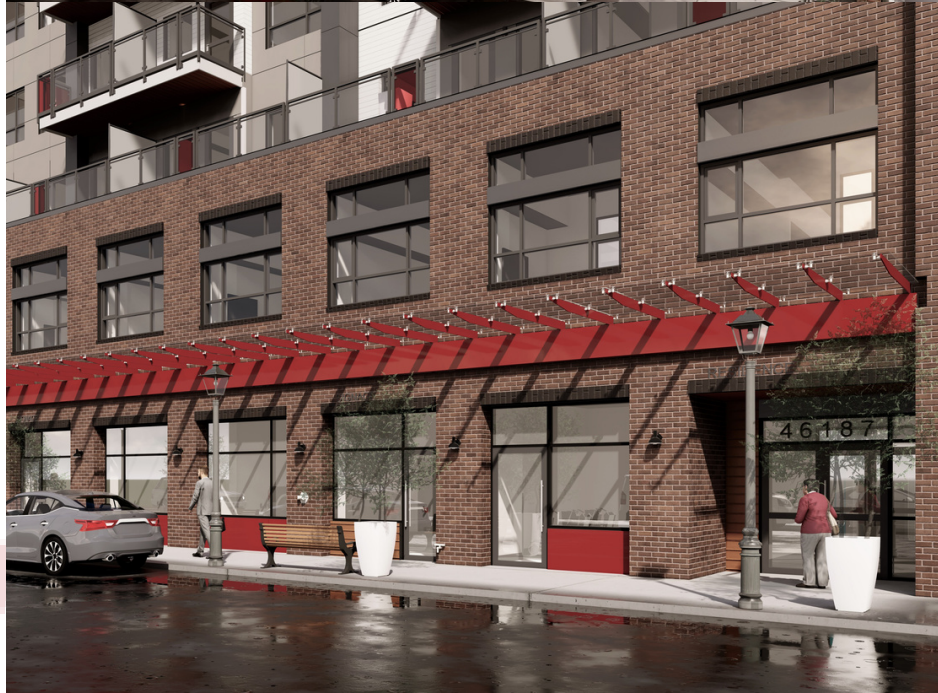
There were a few highlights this year with the Youth Transitional Housing Program. Firstly, a partnership with UFW's School of Social Work and Human Services has enhanced our program through provision of practicum students. These students have enriched the Youth Transitional Housing Program through the individualized support of youth assigned to their caseloads and have provided fresh perspectives for program resources and development. Secondly, a partnership with Buxton Consulting has provided the youth with support for finding employment, employment training, and attending life skills education programs. Thirdly, a partnership with "We Recycle, Bikes for Kids" has provided bicycles to the youth with identified barriers to transportation or who have expressed interest or a need for a bicycle. Lastly, a partnership with the Santa Steve Project provides the youth with a monthly meal for their reoccurring youth residents meeting. They also provide baking and cooking classes.

Programming for the adults is available through our partners at Creative Centres Society at the Clubhouse. The Clubhouse offers food security-based programs and some community engagement related activities in their neighbouring facility. The Village Residence Worker Team is available to the adults 24/7 and work collaboratively with Creative Centres Society to help a resident connect with a mental health worker, community resource worker, community resources, or be present as a safe adult to speak with.

THE PARAMOUNT PROJECT

CCS has embarked on its largest initiative in its history – the Paramount Project. A culmination of the long-standing vision of the Board of Directors, it will address affordable housing in Chilliwack. We know that housing affordability is the number one issue for Chilliwack. The Paramount Project is a 6-storey, 62,000 square foot, affordable housing project with 66 units, 58 for seniors and 8 for young adults aging out of Ministry care. The facility will provide bachelors, 1 bedroom and 2 bedroom suites with rents geared to income starting at \$375 per month. Located in downtown Chilliwack next to the vibrant District 1881, the Paramount Project will also house more than half of CCS' programs, with the others remaining at CCS' Village housing location. This \$28 Million project is under construction and has raised significant resources from B.C. Housing and the CMHC for the housing elements of the building. CCS is funding the program and office spaces totaling some \$6 Million through a combination of internal reserves, financing, and fundraising. The City of Chilliwack and CEPCO generously donated the land and forgave development charges. We have set a capital campaign target of \$1 million and are currently seeking community support. The Paramount Project is scheduled for completion early 2024.

604-792-4267
CCSINFO@COMSERV.BC.CA



FUNDRAISING

Fundraising is important to ensure the operation of our 37 programs and services. Community supporters, donors, and sponsors help make our programs possible. CCS has been supporting the community by building strong and lasting relationships with donors, supporters and sponsors. Through these supports we are able to provide assistance to programs that are not funded.

CCS Secret Soiree

We held our 8th annual CCS Secret Soiree on April 30, 2022. The gala fundraiser was themed Roaring 20's and guests showed up dressed accordingly for a fabulous night out. The guests met at Frankie's Italian Kitchen and were whisked away to our secret location to enjoy the evening. We had the opportunity to debut Bridlewoods Event Centre's beautiful location and facility. The gala included a catered dinner from Frankie's, a dance, and live entertainment as well as many opportunities to participate in our fundraising efforts through auctions, raffles, and other activities. The fundraiser raised a record (NET) \$73,265.

Tour de Chilliwack

We held our second annual Tour de Chilliwack. It is a family friendly cycling fundraiser touring families and friends through the beautiful country on the north side of Chilliwack. Portions of the ride are along the Canyon to Coast Trail and provide a stunning view of Mt. Cheam. The participants in 2022 were able to choose between a 10, 20, 30, 50, and 75 km bike ride. The attendees were able to participate in some activities, enjoy some local Chilliwack cuisine food trucks, and raise pledges up to the day of the event to help in our fundraising efforts. The event was held Saturday, June 4, 2022. The fundraiser raised (NET) \$32,450.

Golf Fore CCS

Golf Fore CCS is a golf tournament fundraiser held at a local golf course in Chilliwack. We provide the opportunity to sign up a team and network with other sponsors, businesses, local leaders, and friends during a fun-filled day. A number of local restaurants and businesses are at each hole and provide refreshments, goodies, and special challenges along the way. We also provide a meal for our participants, so the attendees are full of energy throughout the day to do their best! At the end of the event we have a short reception where we present some stellar prizes for the winners of the on-course challenges as well as the winners of any raffles or other fundraising entries. Our 8th annual Golf Fore CCS was held Thursday, July 7, 2022 at Chilliwack Golf Club. The fundraiser raised (NET) \$16,502.



I Care Campaign and Donations

The community of Chilliwack stepped up to support CCS with rising inflation and increasing economic hardship experienced by all. In total our donors provided \$208,426 towards programs, including donating to our yearly I Care Campaign. In the fall of 2022, we kicked off our I Care end-of-year fundraiser by sending the entire school of Central Elementary to Camp Charis for the day, sponsored by Algra Bros. Developments and Baker Newby LLP.

Annual and Event Corporate Sponsorship

We are proudly backed by many local businesses who believe in what we do. They donate a designated amount of money each year at specific times that help execute our fundraisers. In return, we advertise their companies and give them tickets to our events. This year we raised \$125,625 in annual and event sponsorships thanks to our generous supporters

Grants

Chilliwack Community Services benefitted from more than \$702,170 in grant revenue in this past year. Grants ranged from support for youth services to food security. Notable contributions came from the United Way, Reaching Home (City of Chilliwack) and Reaching Home (VanCity) to mention just a few.

Christmas Sharing

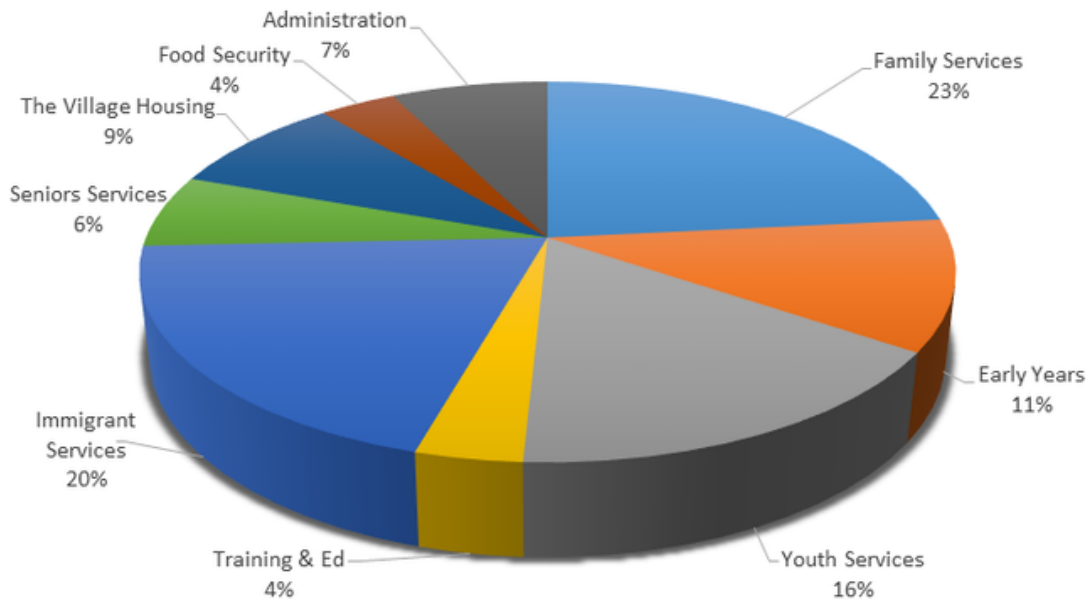
In 2022, CCS partnered again with the Salvation Army to fill Christmas hampers. The Salvation Army collected food and CCS collected toys, clothing and gifts. Each hamper included pajamas for every child, winter clothing, a small toy and a larger one, a stuffed toy/doll and some stocking stuffers. A board game, books, plus arts and crafts were added so that the family could enjoy more time together. Angel trees were set up throughout the city where locals were able to select a tag from the tree and support individuals and families in need. Santa's special elves helped to pick up donations and pack hampers at the secret Christmas Sharing warehouse. The Mount Cheam Rotary Club was able to hold their CATT volleyball tournament and REMAX held a drive thru toy drive. The community was also very generous donating over \$230,000 worth of toys and gifts. Once again the Chilliwack community joined together to help support the Christmas Sharing program. 661 hampers were packed and 1,657 children received gifts this Christmas. Thank you for your continued support!



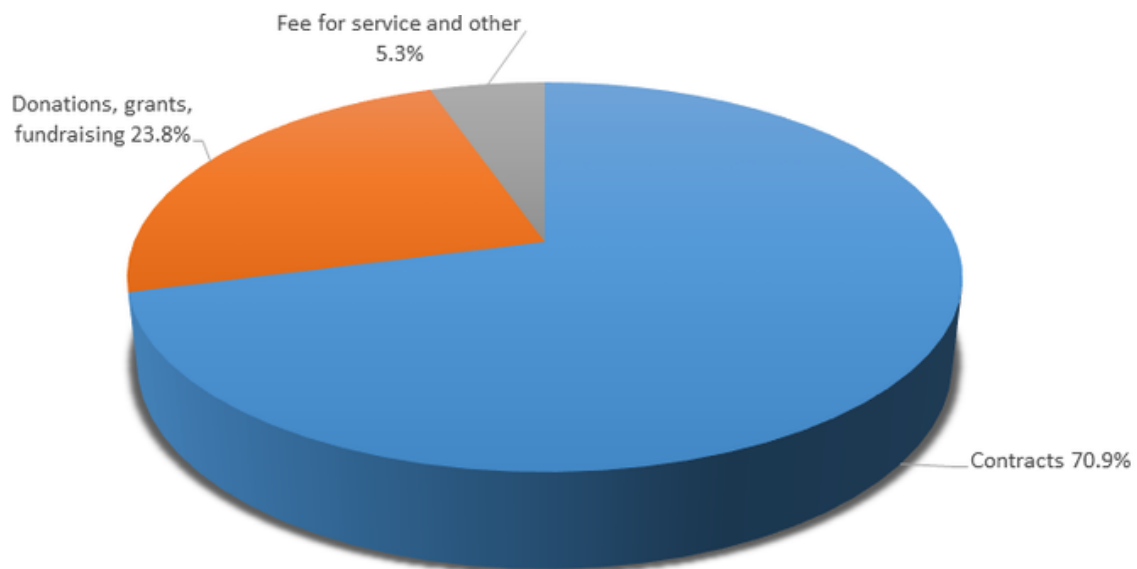
FISCAL YEAR IN REVIEW

COMMITTED TO STRONG FINANCIAL MANAGEMENT AND SUSTAINABILITY

EXPENSES: \$7,469,305



REVENUES: \$7,374,747



NET POSITION:

OPERATING SURPLUS	\$94,558
<u>GAIN ON DISPOSAL OF CAPITAL REVENUE</u>	<u>\$225,300</u>
EXCESS REVENUE OVER EXPENSES	\$319,858

AUDITED FINANCIAL STATEMENTS AVAILABLE WWW.COMSERV.BC.CA



**Chilliwack
Community
Services**

SHARE • GROW • BELONG